

IF YOU CAN'T BEAT 'EM

BLAST 'EM

PENNY RACERS

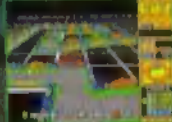
KART RACING GROWS UP.



24 Penny Racers look alike and a hair-raising course to choose from.



Nearly 500 weapons, upgrades and modifications with which to customize your miniature vehicle - a unique cannibalization system allows the winners to take vital parts from the losers.



Track editor for unlimited, custom-made courses. Save your best creation, then power slide, barrel roll and level your skinned friends to the point of humiliation.



A player can hit/roll/flip/throw to the opponent!



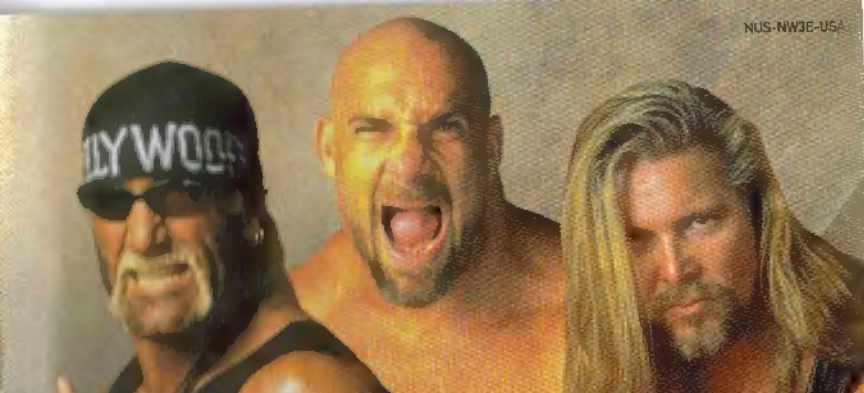
www.thq.com 5016 N. PARKWAY CALABASAS, SUITE 100, CALABASAS, CA 91302

THQ INC.

© 1998 TAKARA Co., Ltd. Manufactured under license by THQ INC. Penny Racers is a registered trademark of TAKARA Co., Ltd. THQ INC. Nintendo, Nintendo 64 and the Nintendo 64 logo are trademarks of Nintendo Inc. in the U.S. and other countries. THQ INC. is a trademark of THQ INC. THQ INC. is a trademark of THQ INC. All characters, names and trademarks of the game series belong to THQ INC. All software © 1998 THQ INC. THQ INC. is a trademark of THQ INC. All Rights Reserved.



PRINTED IN JAPAN



WCW NITRO



Instruction Booklet



WARNINGS AND CONSUMER INFORMATION

WARNING: PLEASE CAREFULLY READ THE CONSUMER INFORMATION AND PRECAUTIONS BOOKLET INCLUDED WITH THIS PRODUCT BEFORE USING YOUR NINTENDO® HARDWARE SYSTEM, GAME PAK OR ACCESSORY. THIS BOOKLET CONTAINS IMPORTANT SAFETY INFORMATION.

THIS PRODUCT HAS BEEN RATED BY THE ENTERTAINMENT SOFTWARE RATING BOARD. FOR INFORMATION ABOUT THE ESRB RATING, OR TO COMMENT ABOUT THE APPROPRIATENESS OF THE RATING, PLEASE CONTACT THE ESRB AT 1-800-771-3772.

THE OFFICIAL SEAL IS YOUR ASSURANCE THAT NINTENDO HAS APPROVED THE QUALITY OF THIS PRODUCT. ALWAYS LOOK FOR THIS SEAL WHEN BUYING GAMES AND ACCESSORIES TO ENSURE COMPLETE COMPATIBILITY. ALL NINTENDO PRODUCTS ARE LICENSED BY SALE FOR USE ONLY WITH OTHER AUTHORIZED PRODUCTS BEARING THE OFFICIAL NINTENDO SEAL OF QUALITY.



For game tips on our products call:

1-900-370-HINT

Must be 18 years of age or have parental permission.
Touch-tone phone required.

\$.95/min. (automated) \$1.25/min. (live 9am-5pm PST)



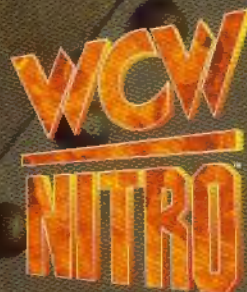
THQ INC.

**5016 North Parkway Calabasas, Suite 100
Calabasas, CA 91302**

LICENSED BY NINTENDO
NINTENDO, THE OFFICIAL SEAL, NINTENDO 64 AND
THE 3-D "N" LOGO ARE TRADEMARKS OF NINTENDO OF AMERICA INC.
©1996 NINTENDO OF AMERICA INC.

Contents

1



Getting Started	2
Control Stick Function	2
WCW NITRO	3
Basic Controls	4
Controller Pak/Rumble Pak Information	5
Saving Games	5
Before the Bell	6
Title Screen	6
Options Screen	7
Options	8
Go for Championship Gold!	10
Choosing a Wrestler	12
Hidden Wrestlers	12
Screen Display	13
Basics of Play	14
Winning Matches	15
Pausing/Quitting the Match	15
The Moves	16
Special Moves	18
Limited Warranty	29

Getting Started

Control Stick Function

The Nintendo 64 Controller contains a Control Stick which uses an analog system to read the angles and direction of its movement. This allows subtle control that is not possible using the conventional Control Pad.

When turning the Control Deck power ON, do not move the Control Stick from its neutral position on the controller.



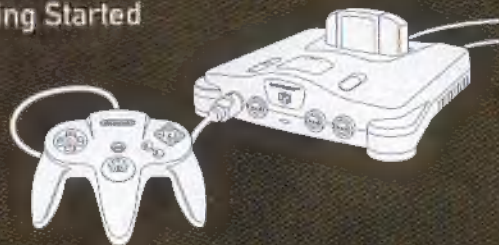
If the Control Stick is held at an angled position (as shown in the picture on the left) when the power is turned ON, this position will be set as neutral. This will cause games using the Control Stick to operate incorrectly.



To reset the neutral position once the game has started, let go of the Control Stick so it can return to its center position (as shown in the picture on the left) then press START while holding the L and R Buttons.

The Control Stick is a precision instrument, make sure not to spill liquids or place any foreign objects into it.

Getting Started



Warning: Never insert or remove a Game Pak when the power is on!

1. Make sure the power is OFF on your N64.
2. Insert the WCW NITRO Game Pak into the slot on your N64.
3. Press firmly to lock the Game Pak into place.
4. Turn the power switch ON.
5. At the Title Screen, press START when prompted to begin GAME TITLE.

WCW NITRO

3

Welcome to the world of WCW Nitro. By opening this manual and turning on your N64, you take center stage in one of the greatest spectacles the world has ever known.

The universe of World Championship Wrestling holds more than mere gladiators battling in the ring.

In sold-out arenas across the country, complex stories play themselves out within the politics of the squared circle.

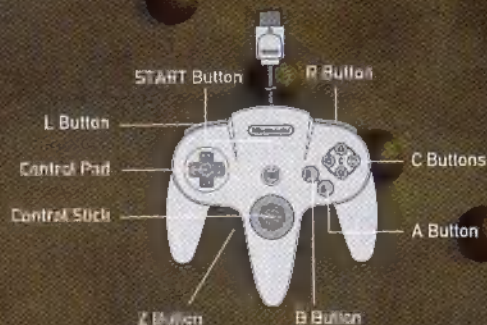
For participants in WCW Nitro, taunting can help or hurt as much as fists to the gut, piledrivers, and bodyslams.

What drives the Superstars of WCW Nitro? These athletes put their bodies, souls, and careers on the line every night in the relentless quest for championship gold and the right to call themselves the best wrestlers in the world.

With WCW Nitro, you take control of your favorite WCW and NWD athletes. Competing against the biggest stable of wrestlers in the history of professional wrestling, your skills drive the fate of your chosen Superstar. The fate of the entire wrestling universe may hang in the balance!



Basic Controls



+Control Pad or Control Stick	Move around the ring
C Button	<ul style="list-style-type: none"> ↑ Chop ↓ Kick ← Punch → Action
A Button	Tag focus
B Button	Taunt
L Button	Block
R Button	Pin Opponent
Z Button	Call for help
Start Button	Pause game

Basic Controls

CONTROLLER PAK/RUMBLE PAK INFORMATION

WCW NITRO is compatible with the Rumble Pak and Controller Pak accessories. Before using either accessory, be sure to carefully read the Rumble Pak and Controller Pak accessory instruction booklets. Follow the onscreen instructions to determine when you should add or remove the Rumble Pak or Controller Pak.

SAVING GAMES

If you do not have a Controller Pak inserted into Controller 1, you will be asked if you wish to play WCW NITRO without saving. If you answer YES, you will not be able to save games at a later point. If you answer NO, you will be prompted to input a Controller Pak into Controller 1.

Note: Information can only be saved on Controller 1. Controller Paks inserted into other controllers will not save information.

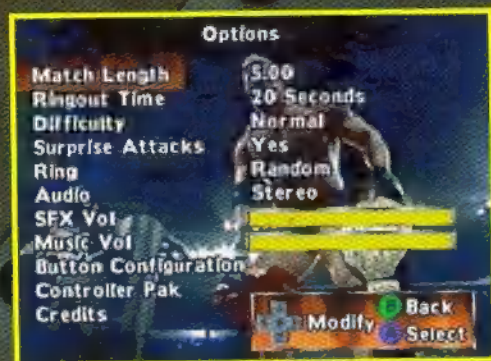


Before the Bell



TITLE SCREEN

At the WCW NITRO Title Screen, you can choose **START GAME** if you're ready to enter gameplay, or you can go to the Options Screen to modify your gameplay choices. Use the **←** Control Pad to highlight **START GAME** or **OPTIONS**, and press the **A** Button to select.

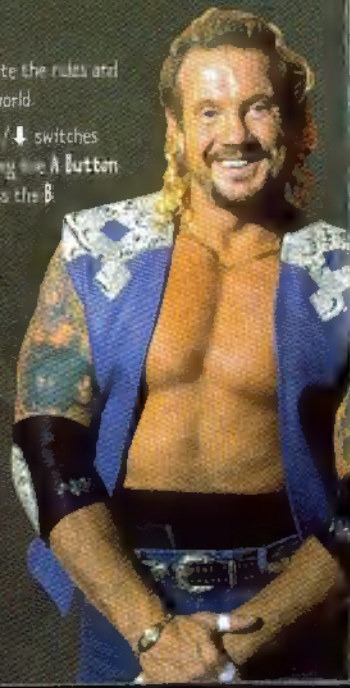


OPTIONS SCREEN

Before talking to the ring, you can review your options and dictate the rules and arena within which you will face the toughest wrestlers in the world.

Use the **←** CONTROL PAD to highlight and modify your options; **↑**/**↓** switches between options; **←**/**→** modifies the highlighted option. Pressing the **A** Button on certain highlighted options takes you to another screen. Press the **B** Button when you are ready to return to the Title Screen.

The options are described on the following two pages.



Options

MATCH LENGTH (DEFAULT: 5:00)

Change the length of each match from 3:00, 5:00, 10:00 or UNLIMITED (no time limit) depending on how much punishment you think you can take!

RINGOUT TIME (DEFAULT: 20 SECONDS)

Action outside the ring is commonplace in professional wrestling, and in WCW Nitro. Limit the time in which players can deal damage outside the ring to 20 SECONDS, 40 SECONDS, 60 SECONDS, or UNLIMITED.

DIFFICULTY (DEFAULT: NORMAL)

Choose from EASY, NORMAL, or HARD. Just so you know, if you choose the Easy level, you probably don't deserve to play with the big boys of WCW NITRO.

SURPRISE ATTACKS (DEFAULT: YES)

Set this to YES or NO. If Surprise Attacks are turned on (with a YES setting), call on your allies from the locker room to run ringside and help you out of a jam. But watch out — your opponents have friends, too.

RING (DEFAULT: RANDOM)

Select one of your favorite WCW venues within which you will battle, or let WCW NITRO select a random mat for you.

AUDIO (DEFAULT: STEREO)

Select either STEREO or MONO sound.

SFX VOLUME

Use \leftarrow/\rightarrow on your **+CONTROL PAD** to adjust WCW Nitro's bone-jarring sound effects.

MUSIC VOLUME

Use \leftarrow/\rightarrow on your **+CONTROL PAD** to adjust the background music level.

Options

BUTTON CONFIGURATION

Press the **A Button** here to enter the Button Configuration screen. Use \leftarrow/\rightarrow on your **+CONTROL PAD** to choose from preset configurations, or use the Custom option to create your own configurations. To create a custom configuration, hold down the **C Button** of your choice, then use \leftarrow/\rightarrow on your **+CONTROL PAD** to change its function. The **A Button**, **B Button**, and **Z Button** will always keep their original functions.

CONTROLLER PAK

With a Controller Pak inserted into your controller, press the **A Button** to enter the Controller Pak screen. Its options include **LOAD**, **SAVE**, and **ERASE**.

SAVE

Press the **A Button** here, then press the **A Button** again over an unused slot to save your WCW NITRO game settings and character status.

LOAD

Press the **A Button** here, then press the **A Button** again over a highlighted slot to load your WCW NITRO game settings and character status.

ERASE

Press the **A Button** here, then press the **A Button** again over a highlighted slot to erase old WCW NITRO saves from the Controller Pak.



CREDITS

Press the **A Button** here for a list of the people who helped make WCW NITRO possible.

Begin Gameplay



GO FOR CHAMPIONSHIP GOLD!

Select **START GAME** at the Title Screen to enter the Select Mode screen. Choose from the following ways to challenge the competition:

1P TOURNAMENT

Try to become the WCW World Heavyweight Champion with the single-player tournament! Choose your wrestler, then beat 10 opponents in a row to earn your title!

1P EXHIBITION

Have a personal grudge against a certain WCW wrestler? Want to hone your skills against someone you consider lightweight competition? Pick your wrestler, then call out any opponent for a one-time, one-night-only confrontation.

2P VS

You and a second player duke it out in a one-on-one battle to the finish.

1P EXHIBITION TAG TEAM

Choose two wrestlers to form a team, and match up against two opponents of your choosing. During a match, you control one man at a time. Get close to your tag team partner and press the **A** button to bring him into the fight.

2P VS TAG TEAM

You and a second player select two players each to battle against each other in a test of tag team supremacy.

1P-4P BATTLE ROYAL

Have no friends and take no prisoners in this ultimate test of stamina and fortitude! Select a wrestler to control, then try to remain the sole survivor against sixteen wrestlers or more in this over-the-top-rope free for all. Eliminate the competition by coosing them over the top rope (**←**, **↓**, **→**) after their energy bars flash red. If your original wrestler gets thrown out before the final bell, you will gain control of the next new combatant to enter the fray. Plug in up to four players for the ultimate in bone-crunching chaos and excitement!





CHOOSING A WRESTLER

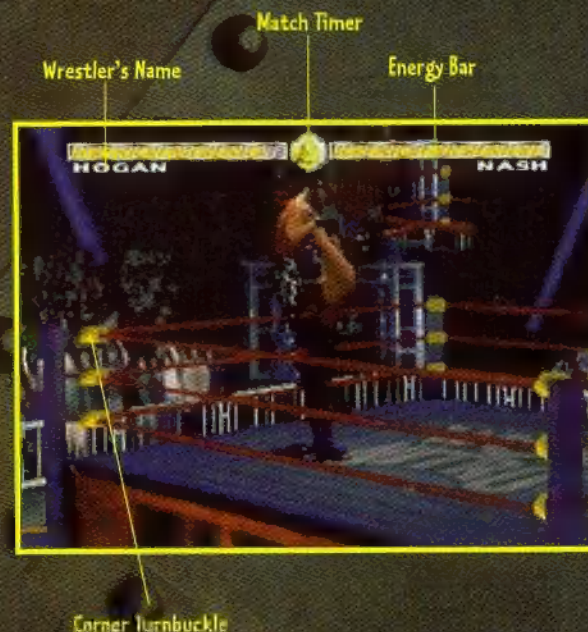
The most important decision you will make as part of WCW NITRO: Which wrestler you will choose to control in your quest to become World Champion. To help you decide, use the **+Control Pad** to highlight a brawler, and press the **A Button** to choose him. Press the **B Button** at any time to move back one screen and change your play mode.

HIDDEN WRESTLERS

Backstage at WCW NITRO are dozens of wrestlers and managers waiting to be part of the action. You may encounter them as run-in characters causing interference or as part of WCW NITRO's Battle Royal mode.

Take control of these characters by winning the Tournament level. Winning tournaments as different characters allows you to take control of different hidden characters. Use the Save mode in the Controller Pak section of the Options Menu to hold onto the hidden characters you've gained.

When starting a game, you must load a previously saved game to reveal those hidden wrestlers you've already found. Once loaded, you can continue to find more hidden wrestlers and managers that are present in WCW NITRO.



Energy decreases as you get hit during the match. If you can avoid being punched or thrown around for a period of time, your energy will gradually increase. This goes for your opponents, too, so keep punishing them! Taunting the opponent during a match pleases the crowd and helps you regain health.

Basics of Play



MATCH LENGTH

Each wrestling match consists of one bout.

BEATING THE OPPOSITION

The winner of a match can be determined in four ways:

- A match can be won by pinning your opponent and holding him for a count of 3.
- A match can be won by default or disqualification if a player or opponent stays outside of the ring for longer than the time allowed.
- If the match is timed, the bell can determine the winner. The player with more energy at the end of the time allotment will be declared the winner after time expires.
- A match can be won by submission if a player or opponent is too weak to continue after being placed in an especially painful hold.

WINNING MATCHES

TOURNAMENT WIN

In a Tournament, the winner will be allowed to battle the next randomly chosen opponent.

EXHIBITION/VS WIN

At the end of an Exhibition or VS match, the game will return to the Title Screen.

BATTLE ROYAL WIN

In Battle Royal mode, the winner is the wrestler who remains as the last man standing after all others have been thrown over the top rope.

PAUSING/QUITTING THE MATCH

Press **START** to pause the game at any time. From the Pause Menu, you can continue the match, restart the battle from the beginning, or quit and return to the Title Screen.



The Moves

Nobody becomes a professional wrestler overnight. Practice and learn these moves to destroy the competition! All the button combinations refer to wrestlers facing right. Reverse the left/right **+Control Pad** controls for wrestlers facing left. Except where noted, all the moves on these two pages can be used by all wrestlers.

KEY COMBINATION	MOVE
(Default Key Configuration)	
↑C	Chop
←C	Punch
↓C	Kick
→C	Action
L Button	Block
R Button	Pin
A	Switch Tag Focus
B	Taunt
Z	Call for Help
Control Pad + →C	Get In or Out of Ring/Climb Turnbuckle
↓, ↓C	Dropkick
←, ←C	Hip Toss
↑, ←C	Snapmare
↑C, ←C	Belly-to-Belly Suplex
↓, ←C, ↑C	Backbreaker
↑, ↑C, ↑C	Body Slam
↓, ↑C	Abdominal Stretch
↑, ↑C, →C	Gorilla Press (Larger Wrestlers Only)
←C, ↓C	Powerbomb
↑C, →C	Piledriver
←, ↑C	Vertical Suplex

The Moves

KEY COMBINATION

MOVE

↑, ←C, ↑C	Head Scissors (Smaller Wrestlers Only)
←, ←C, ↓C	Frankensteiner (Smaller Wrestlers Only)
→, →C	Whip Opponents to Ropes
←, ↓C, →C	Throw Opponent Out of Ring
AFTER WHIPPING OPPONENT TO ROPES	
←C	Clothesline
↑C	Spinning Heel Kick
WITH VICTIM ON GROUND	
←C	Elbow Drop
↑C	Leg Drop
↓C	Knee Drop
↓, ↓C	Stomp
←, →C	Drag Opponent
↑, →C	Lift Opponent to Feet
WITH OPPONENT DAZED IN TURNBUCKLE	
←C	Elbow in the Corner
↑C	Chops in the Corner
↓C	Knees in the Corner
↓, ↓C	Forearm in the Corner
→, ↑C, ↑C	Boot Choke (Larger Wrestlers Only)
←, →C then ←C repeatedly	Ten Punches
AFTER CLIMBING THE TOP ROPE	
←C	Jumping Elbow Drop
↑C	Gullotine Leg Drop
↓C	Jumping Knee Drop
↓, ↓C	Missile Dropkick

Special Moves

basics
 can execute
 have
 all
 can
 call
 The next
 reveal
 can use
 All moves
 one of
 indicated
 Some
 indicated by
 for
 the
 Some
 and indicated by

THE WALL
 With
 With
 After
 in turn



Special Moves



HOLLYWOOD HOGAN

AC → E → L
 FC → FC → FC
 FC → FC → FC

KNEE AVENGE
 HOGAN'S STUNNERS
 HOGAN'S STUNNERS



BRET HART

FC → FC → FC
 FC → FC → FC
 FC → FC → FC

WRESTLING
 WRESTLING
 WRESTLING



STING

FC → FC → FC
 FC → FC → FC
 FC → FC → FC

SCISSOR SWEEP
 STING SWEEP
 STING SWEEP



LEX LUGER

FC → FC → FC
 FC → FC → FC
 FC → FC → FC

WRESTLING
 DIVING CLOTHESLINE
 DIVING CLOTHESLINE

Special Moves



GIANT

→C, FE, FC
 ↓, ↑C, →C
 ↓, ↓C, →C, →C

ONE HANDED PANDA

TWO HANDED CHOKE

CART FLIP



DIAMOND DALLAS PAGE

→C, →C, FC
 FC, →C, →C
 ↓, ↓C, ↓C, →C

FIFTY FIFTY MESSY

LUNGING PUNISH

NINJA CUTTER



RAVEN

→C, ↓C, →C
 →C, ↓C, →C
 ↓, →C, FC, FC

TWO HAT

OVERHEAD ARMWREST

EVENFLOW



SATURN

FC, →C, ↓C
 →C, ↓C, ↓C
 ↓, ↓C, ↓C, ↓C

TWO HAT

GRAPPLE STRIKE

WALL WALK

Special Moves



GOLDBERG

FC, →C, →C
 ↓, ↓C, →C, →C
 ↓, ↓C, FC, FC

TWO HANDED SLAM

SPEAR

CART FLIP



KEVIN NASH

→C, →C, FC
 ↓, FC, →C
 ↓, →C, ↓C, →C

SIDE SLAM

CART FLIP

SUPER



SCOTT HALL

↓C, ←C, →C
 →C, FC, →C
 ↓, →C, →C, FC

HEAVY

TWO HANDED SLAM

OUTSIDERS



CURT HENNING

↑, ↓C, ←C
 ↓C, ↓C, →C
 →C, ↓C, ←C

BELLY TO BRAWN

HEAVY

HENNING

Special Moves



Macho Man
Randy Savage

MACHO MAN RANDY SAVAGE

- ←C, ↓C, ↓C FACE SMASH
 ↑C, ↑C, ←C MACHO SUPLEX
 ↑, ↑C, →C, ↑C FLYING ELBOW DROP+



Rick Steiner

RICK STEINER

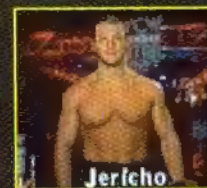
- ↓, ↑C, →C SPINEBUSTER
 ←C, ←C, ←C POWERSLAM
 ←, ↓C, ↓C GARGOYLE SUPLEX
 ↓, ↑C, →C, →C FOOTBALL TACKLE***



Scott Steiner

SCOTT STEINER

- ↑C, ↑C, ↑C FOREARM SMASHES
 ↓C, ↓C, ↓C DOUBLE UNDERHOOK SUPLEX
 ←, ↓C, ↓C GARGOYLE SUPLEX
 ↓, ←C, ←C, ↑C STEINER RECLINER**



Jericho

JERICO

- ←, ↓C, ←C BODY SCISSORS
 ↑C, ←C, ↑C SWINGING HEAD SCISSORS
 ↓, ←C, ←C, ←C LION TAMER**

REVENGE IS JUST TOO SWEET!

Over 60 wrestlers, including
50 WCW and NWO superstars

Unique ring entrances for every wrestler

Smoother animations, better graphics,
faster speed, and smarter AI

Over 300 unique wrestling moves

WCW/NWO REVENGE



© 1998 World Championship Wrestling. A Time Warner Company.
All rights Reserved. WCW™ and NWO™ are trademarks of World
Championship Wrestling, Inc. THQ™ 1998 THQ, INC. Nintendo
Nintendo 64 and the 3-D "N" logo are trademarks of Nintendo of America
Inc. © 1998 Nintendo of America Inc.

WCW/nWo

MERCHANDISE

Sting Moon T-shirt

Wear the latest from the greatest, Sting! Black 100% cotton t-shirt featuring Sting's portrait on front. Available in M-XXL.

STG N 204 T \$20.00



Nitro 3-D Hat

Charcoal grey, low peak hat has embroidered 3-D Nitro logo. 100% brushed cotton twill hat has adjustable back closure.

TNT W 200 HAT \$15.00



Big Sexy T-shirt

Wear the latest from the Pac's Big Man! Black, 100% cotton t-shirt featuring Kevin Nash in full color on front. Available in M-XXL.

NSH N 200 T \$20.00

Raven's Flock Ankh T-shirt

Join the Flock! 100% cotton, black with screened ankh on front and "I feel your pain" on the back. Sizes M-XXL available.

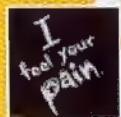
ANK W 200 T \$20.00



Bret Hart Flag T-shirt

100% cotton, black with screened design on front. Sizes M-XXL.

BRT W 200 T \$20.00
Available in Youth M,L \$15.00

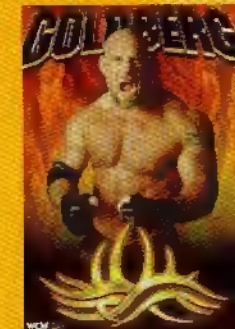


Back

Goldberg Poster

It's the most feared man in professional wrestling, in ring-rocking full color! Measures 24"x 36."

GLD W 200 PST \$7.00



nWo Heavyweight Belt

Looks just like WCW's Heavyweight belt, with one noticeable improvement! Attaches around the waist with velcro. One size fits most.

NWO N 200 BLT \$15.00



Sting MASK

Now you can look like Sting every day of the week! Made from polystyrene and measures 8" tall.

STG W 200 MSK \$10.00



Goldberg Tattoo Hat

Features Goldberg's world-renowned tattoo design embroidered in white on black cotton twill hat with adjustable back closure.

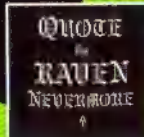
GLD W 200 HAT \$15.00



Quote the Raven T-shirt:

100% cotton, black with screened picture on front and "Quote the Raven Nevermore" screened on the back. Available in M-XXL.

RVN W 200 T \$20.00



Back



WCW Heavyweight Belt

Nothing is better than being the champ! Belt attaches around the waist with velcro. One size fits most.

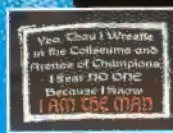
WCW W 200 BLT \$15.00

Hollywood Hogan Skull T-shirt

100% cotton, black with screened design on front and "I Am The Man!" saying on back.

Available in M-XXL.

HHG N 201 T \$20.00



Back

WCW Black Logo Hat

Black suede brushed cotton with embroidered WCW logo in purple and gold. Adjustable back closure.

WCW W 204 HAT \$15.00



nWo Wolf Head T-shirt

Tell the world that you're down with the nWo Red & Black! Red 100% cotton t-shirt featuring nWo Wolf head printed on front. Available in M-XXL.

WLF N 200 T \$20.00



Back

ORDER TOLL-FREE

WCW/nWo

1-800-929-8468

24 Hours / 7 Days a Week

SOURCE CODE WNIN088

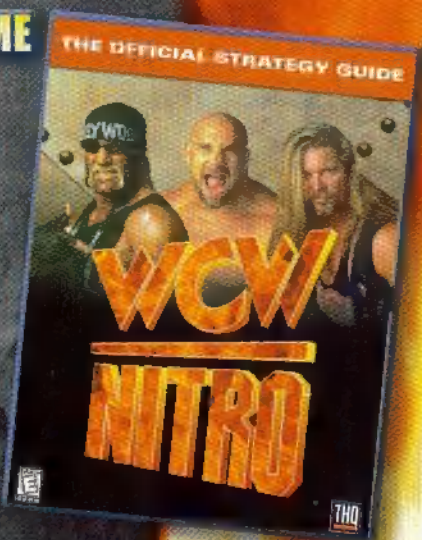
wcwrestling.com
nwowrestling.com

YOU'VE GOT THE GAME
NOW GET
THE GUIDE

WCW
NITRO™

The Official Strategy Guide
Platform: N64 and PC

Prima Publishing
Available wherever games are sold



WALK SOFTLY & CARRY A BIG MAGIC STICK.



A massive adventure RPG.

"...will set the standard for 3D epics."
-Nintendo Power

"...will provide diehard RPG players
and newcomers to the genre with
many hours of solid gameplay."
-Q&A

"Incredibly sweet graphics."
-EGM

www.thq.com



© 1998 THQ Inc. All rights reserved. THQ, Quest 64, and the THQ logo are trademarks of THQ Inc. in the USA and other countries.



BLAZING HOT



EXPLOSIVE, ALL-NEW SERIES FEATURING:

- Biggest, Baddest, Best Wrestlers In The Business
- Hottest 'Rookie' Sensations
- The Nitro Stars
- Exclusive, In-Your-Face Photography
- Eye-Catching New Graphics & Packaging

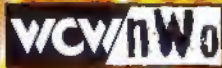
ON SALE MARCH!

Call toll free at 1-888-GO-TOPPS for a listing of card stores in your area

CHECK OUT THE OFFICIAL WCW WEBSITE
AT WWW.WCW.COM



© 1999 World Championship Wrestling, A Time Warner Company. All Rights Reserved. WCW™ and Nitro™ are trademarks of World Championship Wrestling, Inc. Topps is a registered trademark of The Topps Company, Inc.



Limited Warranty

29

THQ Inc. warrants to the original consumer purchaser that this Game Pak shall be free from defects in material and workmanship for a period of 90 days from the date of purchase. If a defect covered by this warranty occurs during this 90-day warranty period, THQ Inc. will repair or replace the Game Pak at its option, free of charge.

To receive this warranty service:

1. DO NOT return your defective Game Pak to the retailer.
2. Notify the THQ Inc. Consumer Service Department of the problem requiring warranty service by calling: (816) 225-5167. Our Consumer Service Department is in operation from 8:00 a.m. to 5:00 p.m. Pacific Standard Time, Monday through Friday.
3. If the THQ Inc. service technician is unable to solve the problem by phone, he/she will provide you with a Return Authorization number. Simply record this number on the outside packaging of your defective Game Pak, and return your Game Pak freight prepaid, at your risk of damage, together with your sales slip or similar proof-of-purchase within the 90-day warranty period to:

THQ Inc. Consumer Service Department,
5016 N. Parkway Calabasas, Suite 100, Calabasas, CA 91302

This warranty shall not apply if the Game Pak has been damaged by negligence, accident, unreasonable use, modification, tampering, or by other causes unrelated to the defective materials or workmanship.

REPAIRS AFTER EXPIRATION OF WARRANTY: If the Game Pak develops a problem after the 90 day warranty period, you may contact the THQ Inc. Consumer Service Department at the phone number noted. If the THQ Inc. service technician is unable to solve the problem by phone, he/she may provide you with a Return Authorization number. You may then record this number on the outside packaging of the defective Game Pak. Send the defective Game Pak, along with \$35.00 freight prepaid to THQ Inc. THQ Inc. will, at its option subject to the conditions above, repair the Game Pak or replace it with a new or reworked Game Pak. If replacement Game Paks are not available, the defective Game Pak will be returned until the \$35.00 payment refunded.

WARRANTY LIMITATIONS: ANY APPLICABLE IMPLIED WARRANTIES, INCLUDING WARRANTIES OF MERCHANTABILITY AND FITNESS FOR A PARTICULAR PURPOSE ARE HEREBY LIMITED TO NINETY DAYS FROM THE DATE OF PURCHASE AND ARE SUBJECT TO THE CONDITIONS SET FORTH HEREIN. IN NO EVENT SHALL THQ INC. BE LIABLE FOR CONSEQUENTIAL OR INCIDENTAL DAMAGES RESULTING FROM THE BREACH OF ANY EXPRESS OR IMPLIED WARRANTIES.

The provisions of this warranty are valid in the United States only. Some states do not allow limitations on how long an implied warranty lasts or exclusion of consequential or incidental damages, so the above limitations and exclusion may not apply to you. This warranty gives you specific legal rights, and you may also have other rights which vary from state to state.

THQ Inc. 5016 N. Parkway Calabasas, Suite 100, Calabasas, CA 91302. (816) 225-5167